

BELLA VISTA WATER DISTRICT

11368 E. STILLWATER WAY
REDDING, CA 96003
(530) 241-1085 ♦ (530) 241-8354
www.bvwd.org

SCHEDULE OF BIMONTHLY WATER RATES

AGRICULTURAL

| <u>Meter Class</u> | <u>Base Rates</u> |
|--------------------|-------------------|
| 50 | \$63.50 |
| 100 | \$71.24 |
| 160 | \$78.04 |
| 200 | \$81.81 |
| 300 | \$89.70 |
| 450 | \$99.17 |
| 900 | \$119.97 |
| 1200 | \$130.69 |
| 1500 | \$140.02 |
| 2000 | \$153.52 |
| 2500 | \$165.26 |
| 3300 | \$181.61 |
| 4500 | \$202.47 |
| 6000 | \$224.59 |

The commodity rate is \$64.73 per acre-foot (\$0.1486 per HCF)

Water Treatment Plant Improvement Loan Repayment

\$14.00 bimonthly charge for all customers.

NDU Credit

Agricultural accounts that have no domestic use will receive a \$4.00 bimonthly base charge reduction referred to as a NDU credit.

WATER EQUIVALENTS TABLE

1 Cubic Foot = 7.48 gallons = 62.4 pounds of water
1 Acre Foot = 43,560 cubic feet = 325,900 gallons

An acre foot covers (1) acre of land (1) foot deep

1 cubic foot per second (cfs) = 450 gallons per minute or 646,320 gallons per day

For 24 hours = 1.983 acre feet

For 30 days = 59.5 acre feet

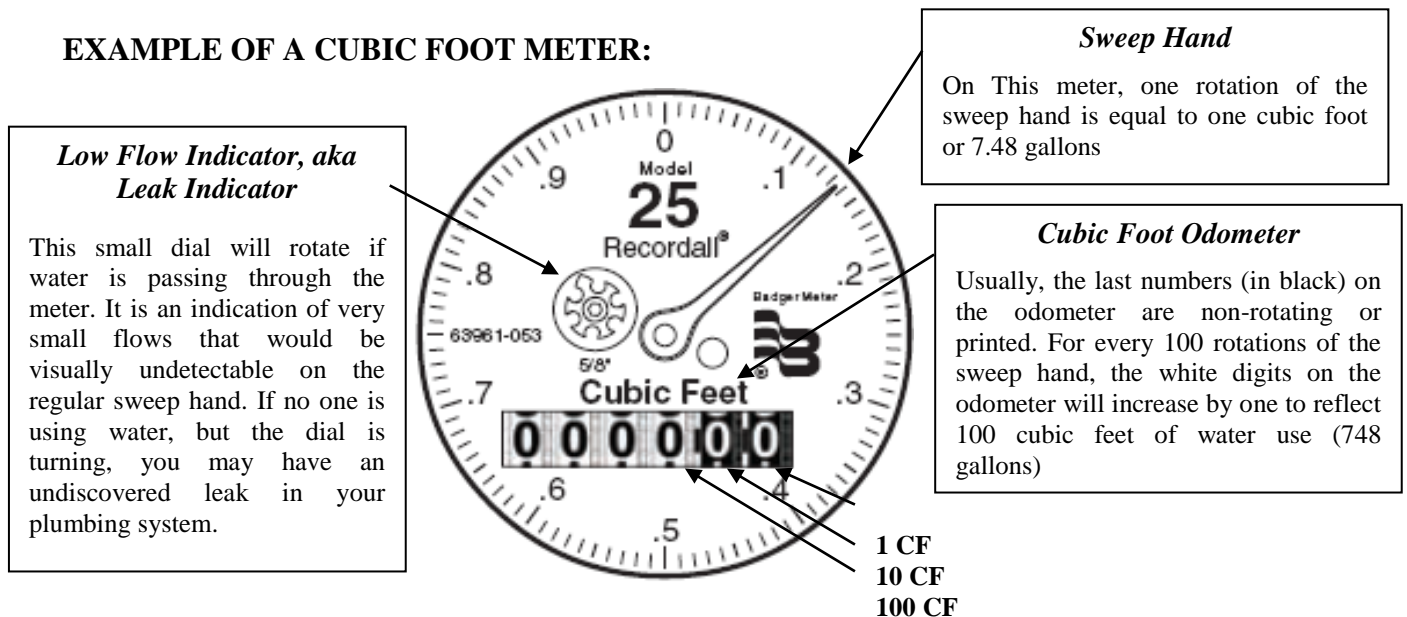
For one year = 724 acre feet

PROCEDURE FOR METER READING

If register lens is dirty, a light wipe with a damp cloth will clear lens for an accurate reading. Always remember to close the register cover after reading meter to avoid exposure to cracking or scratching of lens.

One of the most important factors in a correct reading is to note the proper number of digits. Read the meter register from left to right.

EXAMPLE OF A CUBIC FOOT METER:



BILLING: You will be billed for water service bimonthly; thus, the water meter will be read as nearly as possible on the same day every two (2) months. The bills are due and payable on the date of receipt and become delinquent twenty-two (22) days thereafter. Payments can be made to the District office by mail, in person, or online at: www.invoicecloud.com/bvwd. The District is currently using Invoice Cloud which allows for automatic payment deductions and only charges a small service fee of \$0.95 if utilizing (e-checks) your checking account or \$2.95 if you would like to continue to utilize your credit or debit cards. All fees are charged by Invoice Cloud and you will no longer see an adjustment on your Bella Vista Utility Billing for any charges.

OFFICE HOURS: The district office is open from 8:00 a.m. to 5:00 p.m., Monday through Thursday, and 8:00 a.m. to 4:00 p.m. on Fridays, except holidays. For after-hour emergencies, there is an answering service.